



We create chemistry

BASF Antwerpen N.V.  
Scheldelaan 600 – Haven 725  
2040 Antwerpen

October 22, 2021

**Subject:** Gate 15 at BASF Antwerp

Dear carriers,

With this communication we would like to inform you that as from 25/10/2021 BASF Antwerp will introduce a completely new gate infrastructure, being gate 15.

The new gate is located at the North of our site, just across our intermodal terminal Combinant. Coming from the A12, drivers are to take exit Zandvliet and after crossing the bridge 'Noordlandbrug' they will immediately see the new infrastructure at their right side. A new road sign also clearly indicates the respective exit in order to access gate 15 (this in both directions on the Scheldelaan). You will find an overview of the new infrastructure on the next page.

Our goal is to streamline the traffic at our site, prepare for the additional volumes linked to the current EO-expansion and initiate a future-proof infrastructure for administrative handling of trucks. For that, we initiate following split for the flows towards our gates 6 and 15, this for both check-in as check-out:

- **Gate 6**
  - Outbound packed
  - Inbound (bulk & packed)
  - Third party volumes (Styrolution, Eurochem, AirLiquide,...)
  - Waste
  
- **Gate 15**
  - Outbound bulk
  
- **Fastlane**
  - Outbound bulk & packed, this only for specifically designated carriers & drivers

Please instruct your drivers to adhere to this new split between our gate 6 and 15, this as from Monday 25/10. We will maintain a transition period where the drivers for outbound bulk will still be able to check-in at gate 6, this until 8/11. From that date on, they will be refused by our personnel at gate 6 and be diverted to gate 15.

Yours sincerely,

**BASF Antwerpen N.V.**  
Logistics Operations

Nicholas Gibbs  
Manager Surface Distribution

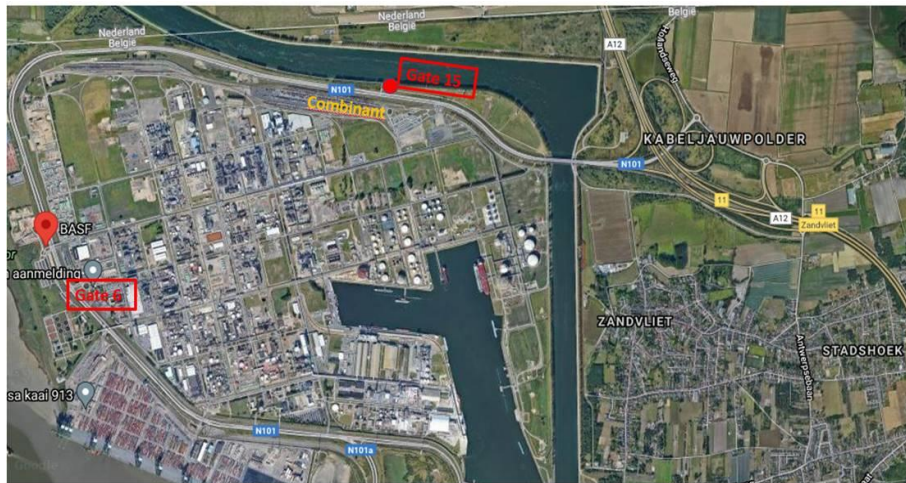
**BASF Antwerpen N.V.**  
Scheldelaan 600  
B-2040 Antwerpen 4  
Telefoon : +32-3-561 21 11 (centrale)  
Telefax: +32-3-561 37 47  
Telex: 32414

RPR Antwerpen 0404.754.472  
BTW - BE - 0404.754.472  
Deutsche Bank AG  
Rek. EUR 826-6014060-77  
Ibannr. BE80 8266 0140 6077

Following overview of the new infrastructure at gate 15:

1. Location

Coming from the A12, drivers are to take exit Zandvliet and after crossing the bridge 'Noordlandbrug' they will immediately see the new infrastructure at their right side

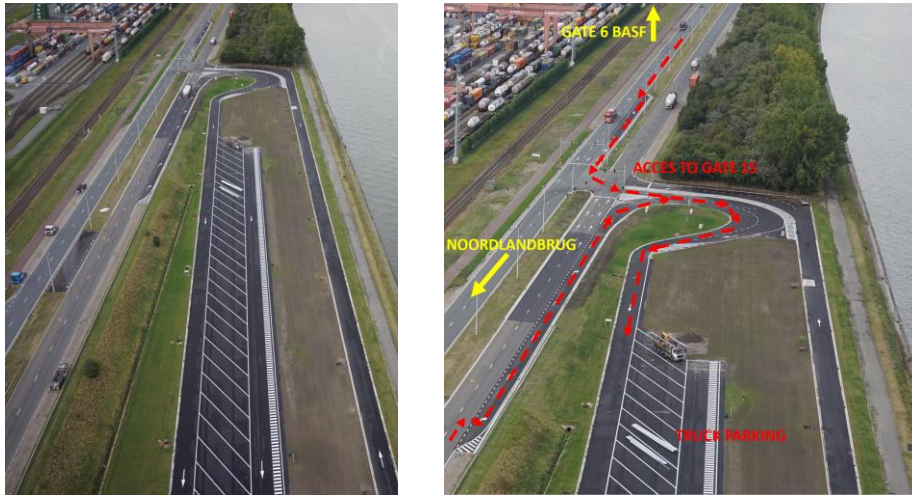


2. Overview:



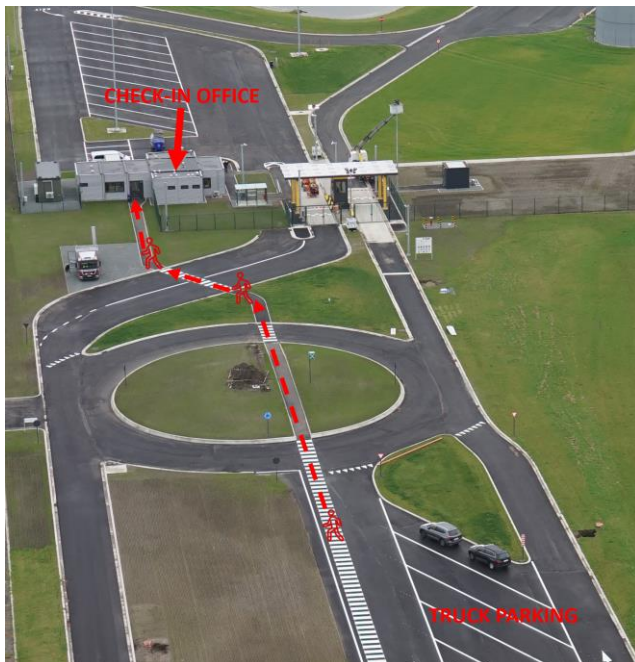
3. Parking

Currently already 30 parking spaces are foreseen for the drivers to park and walk towards the administrative building.



4. Administrative building

Drivers walk towards our administrative building left of gate 15, this via the pedestrian crossing. In this building drivers can perform the check-in process, preferably at the self-service check-in kiosks or, if needed, by our personnel. After loading and if applicable, drivers will also receive customs documents in this building.





- 5. Gate  
Both gate in and gate out

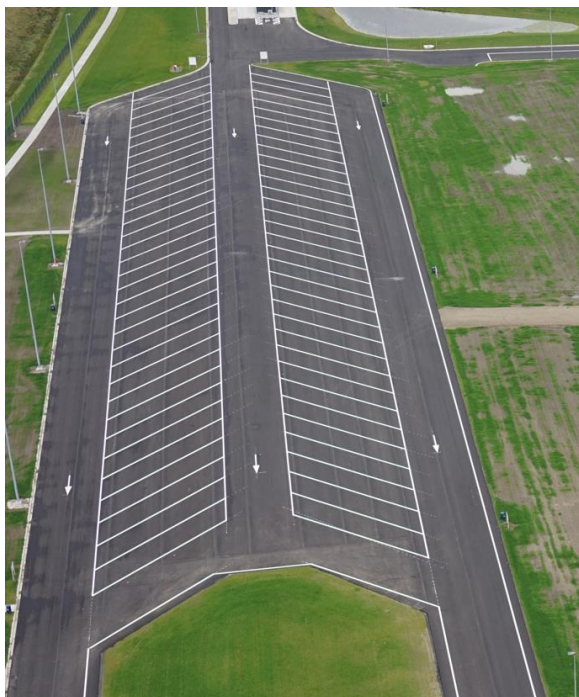


- 6. Weighing bridges  
We have 2 weighing bridges which are both for weighing-in as weighing-out.



7. Call-off parking

An additional internal parking is foreseen, this if certain drivers would be in scope for the call-off process. Additional waiting room for the drivers is foreseen. Further information will follow once this process will go live.



8. Barrier

Numberplate will be checked via an ANPR-camera, this to validate if the respective driver may continue towards the loading station (this as part of the future call-off process). Final gate will open automatically, after which the driver can drive under the bridge Noordlandbrug and proceed towards the loading station.



9. Gate out

After loading the drivers **NEED** to return to gate 15 for weighing-out, eventual customs and check-out.